



EQUALTILE

Proudly Manufactured By:



Surface Mount (Retro) Detectable Warning Panels

WWW.EQUALTILE.COM

800-996-4510



PRODUCT SELECTION

WET SET / SURFACE MOUNT



Detectable Warning Systems

EqualTile Product Standard Panel Colors

All colors are blended into polymer concrete material during manufacturing and homogenous throughout the panel. Additional colors and sizes are available upon request.

OCEAN BLUE FED ST 15187	GREEN G-43	PURPLE R-44	BRICK RED FED ST 22144	COLONIAL RED FED ST 20109
BLACK FED ST 17038	LIGHT GREY FED ST 26280	DARK GREY FED ST 36118	PINK R-24	FEDERAL YELLOW FED ST 33538

EqualTile Product Custom Colors

EqualTile by Advanced Roadway Manufacturing can produce unlimited color variations. We focus on customer service, by developing custom color detectable warning panels to meet the demands of architectural design requirements. EqualTile has worked closely with contractors, municipalities, and state agencies in developing our detectable warning panels to meet their needs and can produce just about any color to conform to project specifications. Contact your nearest EqualTile representative or an authorized Advanced Roadway Manufacturing distributor for more information or technical assistance on our products and capabilities.



(800) 996-4510
info@roadwaymfg.com
www.equaltile.com

PRODUCT SPECIFICATION

SURFACE APPLIED - (RETROFIT)



Detectable Warning Systems

Surface Applied - Retrofit Specifications:

SIZE WxLxD	PART NUMBER	STANDARD COLORS	CUSTOMIZABLE
24"x24"x1/8"	EQ-2X2-SM	FEDERAL YELLOW, BRICK RED, BLUE, DK GREY, LT GREY, BLACK	YES
24"x36"x1/8"	EQ-2X3-SM	FEDERAL YELLOW, BRICK RED, BLUE, DK GREY, LT GREY, BLACK	YES
24"x48"x1/8"	EQ-2X4-SM	FEDERAL YELLOW, BRICK RED, BLUE, DK GREY, LT GREY, BLACK	YES
24"x60"x1/8"	EQ-2X5-SM	FEDERAL YELLOW, BRICK RED, BLUE, DK GREY, LT GREY, BLACK	YES
36"x48"x1/8"	EQ-3X4-SM	FEDERAL YELLOW, BRICK RED, BLUE, DK GREY, LT GREY, BLACK	YES
36"x60"x1/8"	EQ-3X5-SM	FEDERAL YELLOW, BRICK RED, BLUE, DK GREY, LT GREY, BLACK	YES

Product Features

- ☑ 5 Year Manufacturer Warranty
- ☑ Durable & Strong
- ☑ Ease Of Install
- ☑ Simple Replacement & Re-Coating
- ☑ Ships Nationwide
- ☑ Sent Complete With Anchors And Adhesive
- ☑ Manufactured With Over 100 Years Of Combined Experience In Production, Sales, Installation And Maintenance
- ☑ Guaranteed Satisfaction
- ☑ B.A.B.A. Certified - Made In USA

Surface Applied - (Retrofit) Technical Data:

TEST DESCRIPTION	TEST METHOD	VALUE (Nominal)
COMPRESSION STRENGTH	ASTM D 695	21,100 PSI
WATER ABSORPTION	FM 5-D570	0.1%
FLEXURAL STRENGTH	ASTM D 790	20,000 PSI
FLEXURAL MODULUS	ASTM D 790	5.0 x 10 ⁵
TENSILE STRENGTH	ASTM D 638	10,000 PSI
TENSILE MODULUS	ASTM D 638	5.0 x 10 ⁵
TENSILE ELONGATION	ASTM D 638	3.0%
HDT	ASTM D 648	170 DEGREES FAHRENHEIT
HARDNESS, BARCOL 934-1	ASTM D 2583	35
SLIP RESISTANCE	FM 3-C1028	1.03 DRY, 0.73 WET
WEAR RESISTANCE	FM 5-594	0.031 CM ³
SALT SPRAY	ASTM B 117	NO CHANGE (200 HOURS)
CHEMICAL STAIN TESTING	ASTM D 543	NO DETERIORATION
ABRASION RESISTANCE	ASTM C 501	435
EPA (RCRA)	EPA-1311, EPA-6010D, EPA-7470A	MEETS REGULATIONS
ADHESION TO CONCRETE	FM 5-589	668 PSI



(800) 996-4510
sales@roadwaymfg.com
www.equaltile.com

SURFACE APPLIED PANEL INSTALLATION



Detectable Warning Systems

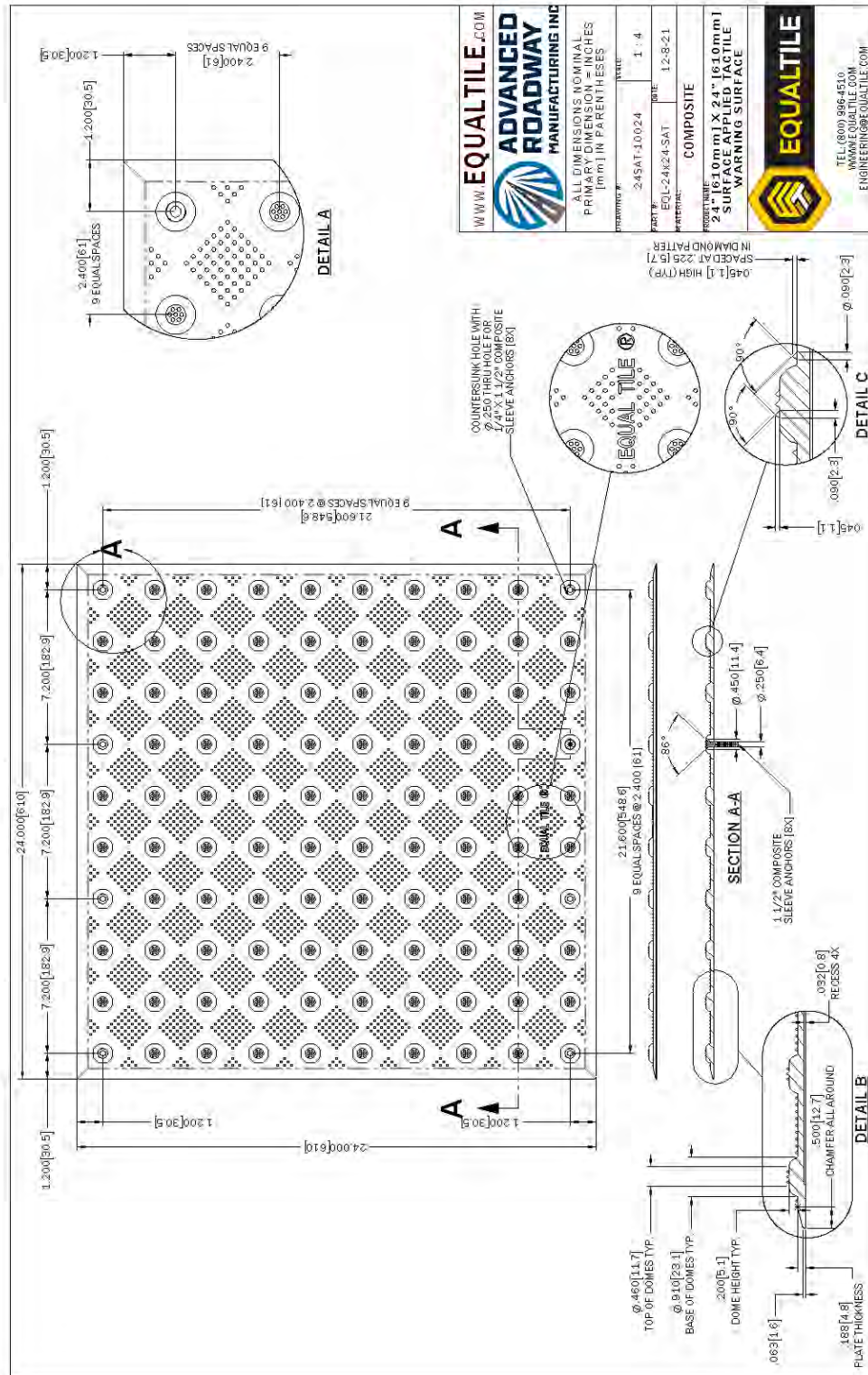
Recommended Surface Applied Panel Instructions:

1. Read and follow all manufacturer instructions on the adhesive container.
2. Installation area should be dry. New poured concrete should be cured for a minimum of 72 hours.
3. Clean the desired area of all debris, oil, grease, dirt, etc.
4. Wipe down back of the detectable warning panel to remove dirt and debris.
5. Cut nozzle tip and insert into a heavy duty or battery operated caulking gun.
6. Apply a uniform bead (approximately 1/4") of "adhesive" to scratched rib areas. Apply another bead of adhesive on all (4) edges to properly seal panel perimeter. Remaining adhesive may be placed on remaining scratched areas.
7. Place the detectable warning panel at the desired location and apply pressure. Adhesive should squeeze out under the perimeter of the panel.
8. Drill holes through the notches and concrete, insert anchor and hammer until ridge is flush to dome.
9. Tape 1/4" around all edges and apply thin bead of adhesive. Protect from foot and vehicular traffic until adhesive has hardened.

The above installation instructions are not meant to override application codes or local agency's requirements.



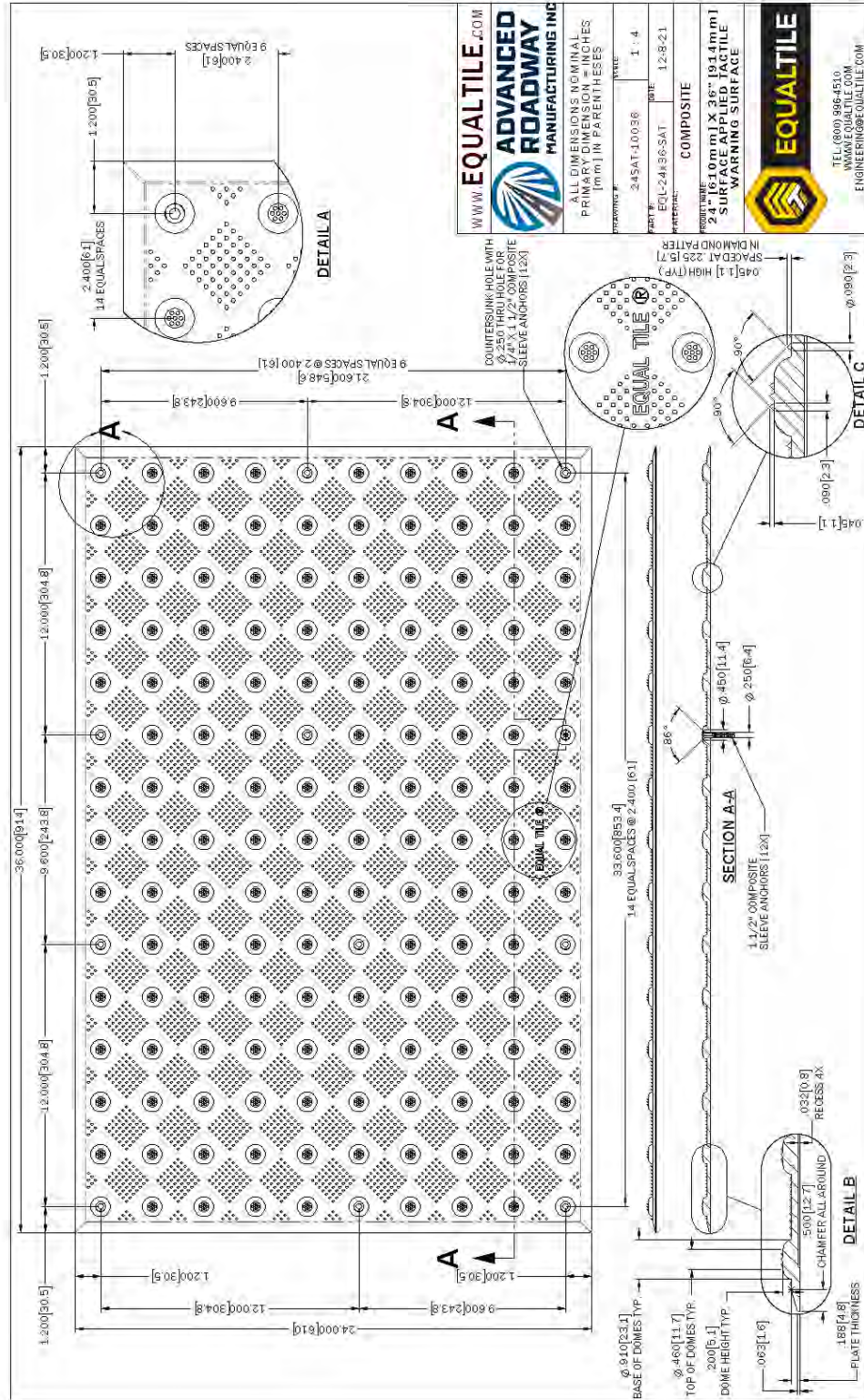
SURFACE APPLIED 2x2 TACTILE WARNING PANEL



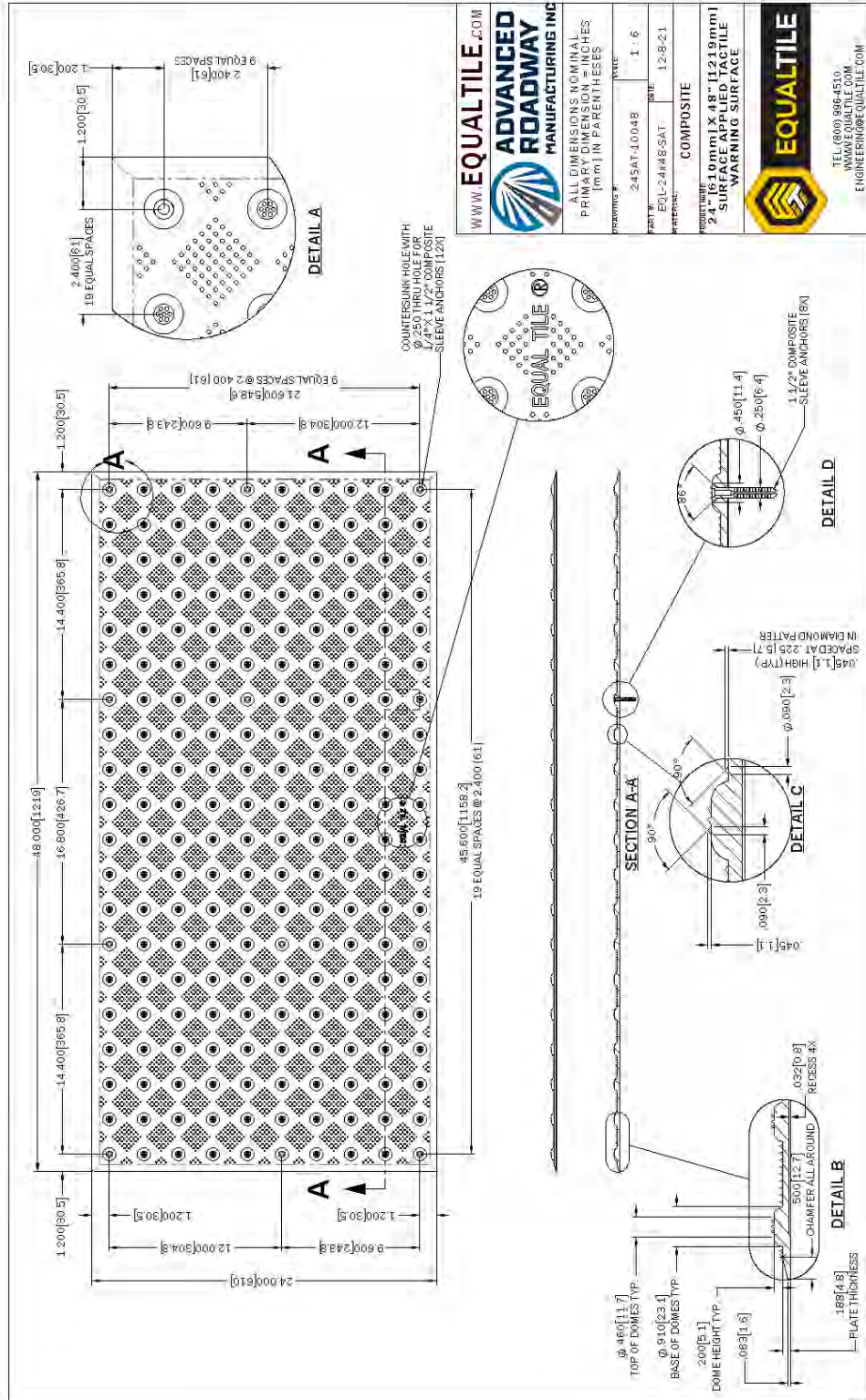
SURFACE APPLIED 2x3 TACTILE WARNING PANEL



EQUALTILE



SURFACE APPLIED 2x4 TACTILE WARNING PANEL



WWW.EQUALTILE.COM
ADVANCED ROADWAY MANUFACTURING INC
ALL DIMENSIONS NOMINAL
PRIMARY DIMENSION = INCHES
[mm] IN PARENTHESES

DRAWING NO. 24SAT-1.004B
SCALE 1 : 1
PART NO. EQL-24M48-SAT
DATE 12-8-21

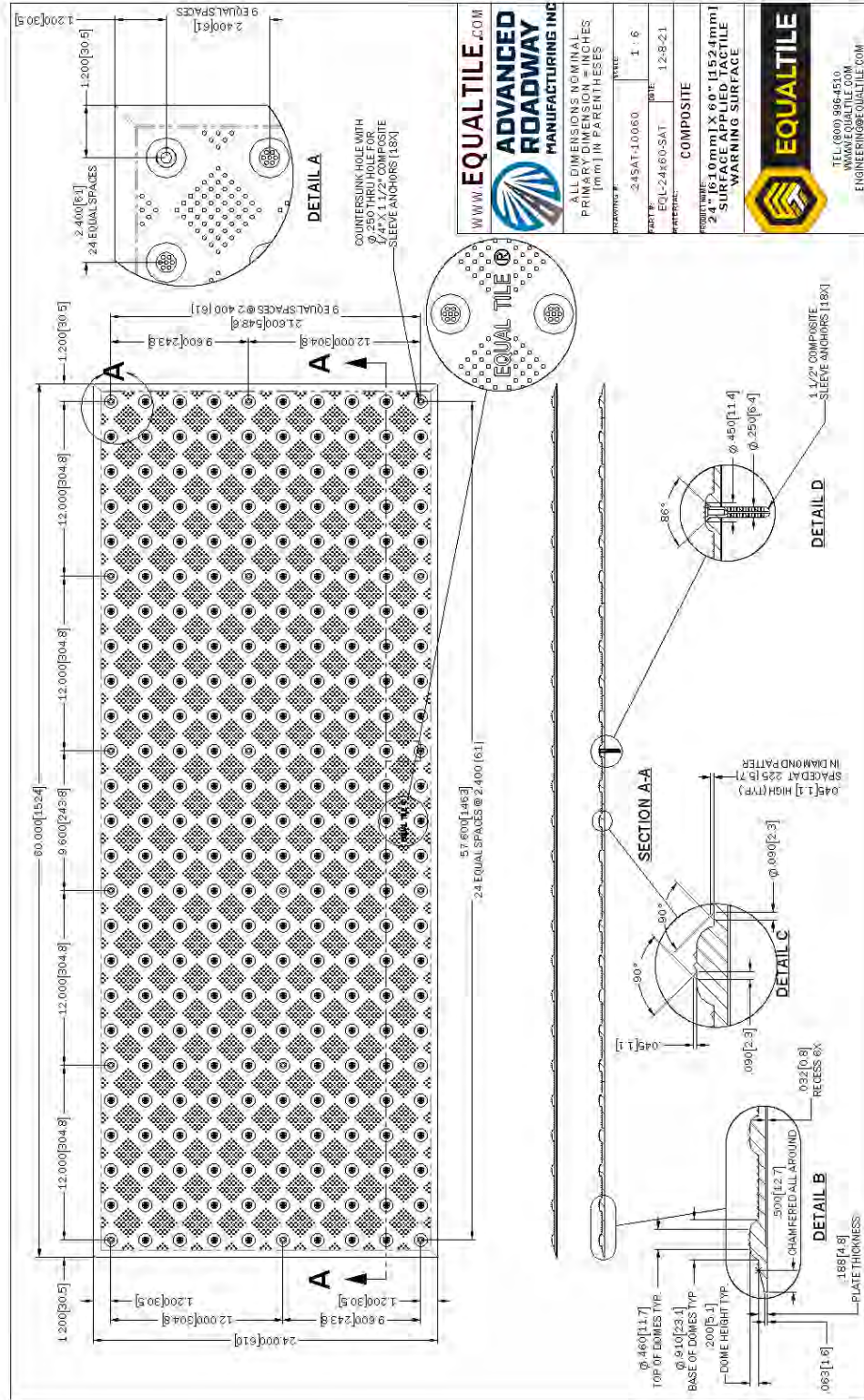
COMPOSITE
PRODUCTS 1 1/2" X 4 1/2" (1 1/2" X 19 mm)
2 1/2" SURFACE APPLIED TACTILE
WARNING SURFACE

EQUALTILE
TEL: (800) 996-4510
WWW.EQUALTILE.COM
ENGINEERING@EQUALTILE.COM



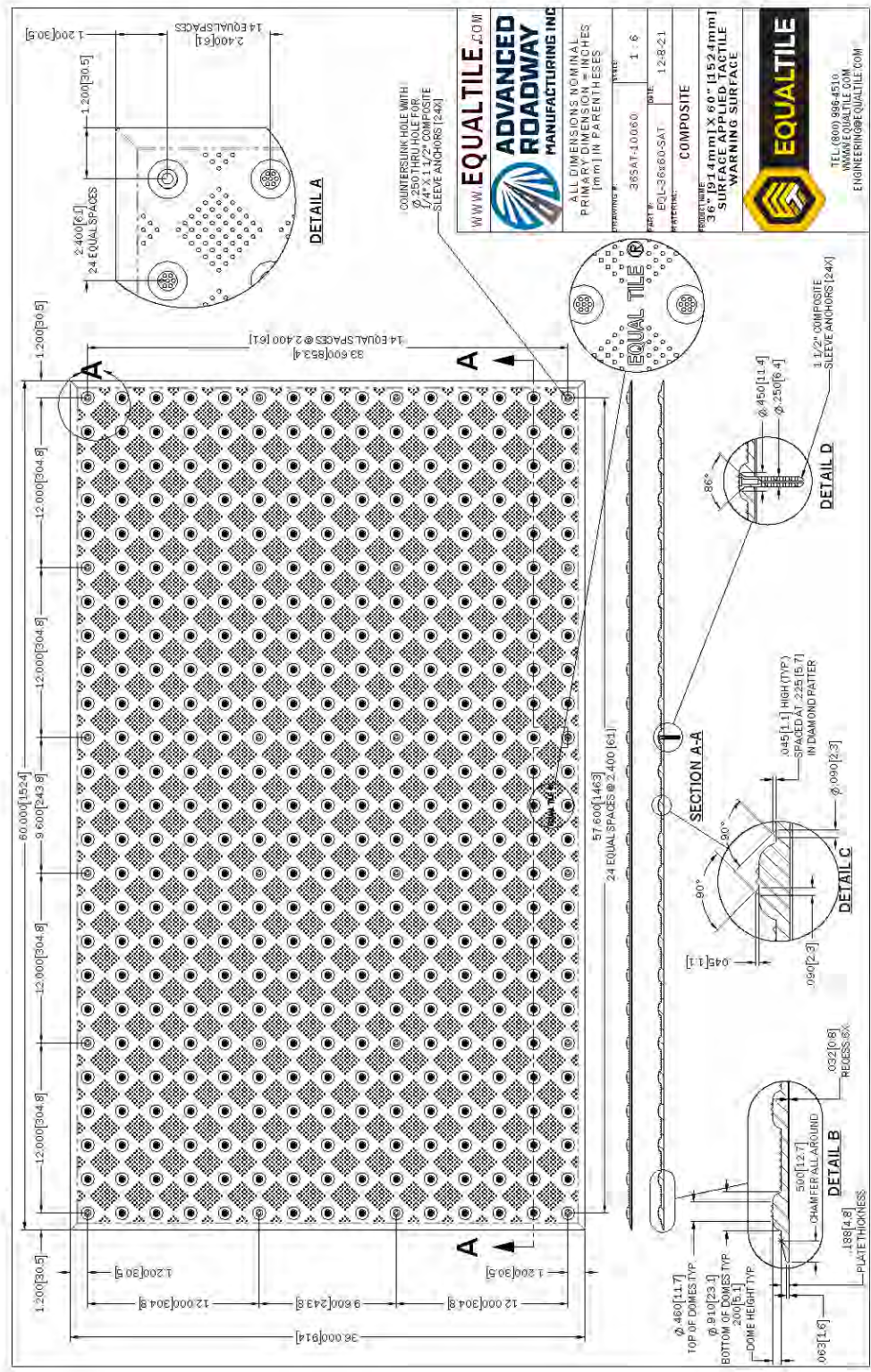
(800) 996-4510
sales@roadwaymfg.com
www.equaltile.com

SURFACE APPLIED 2x5 TACTILE WARNING PANEL



(800) 996-4510
sales@roadwaymfg.com
www.equaltile.com

SURFACE APPLIED 3x5 TACTILE WARNING PANEL



(800) 996-4510
sales@roadwaymfg.com
www.equaltile.com



STANDARD LIMITED MATERIAL WARRANTY

PROJECT: _____

DATE OF COMPLETION: _____

REFERENCE NUMBER: _____

INSTALLED BY: _____

TOTAL SQUARE FEET: _____

PATTERN & COLOR: _____

1. LIMITED WARRANTY:

A. EQUALTILE (AN ADVANCED ROADWAY MANUFACTURING COMPANY) ("MANUFACTURER") WARRANTS THAT THE DETECTABLE DOME SYSTEM ("PRODUCT") COMPLIES WITH THE ARCHITECTURAL STANDARDS AS PUBLISHED IN THE CURRENT EDITION OF THE BUILDING STANDARDS CODE, INCLUDING DURABILITY CRITERIA WHICH INDICATES THAT THE SHAPE, COLOR FASTENERS, CONFIRMATION, SOUND-ON-SOUND, ACOUSTIC QUALITY, RESILIENCE AND ATTACHMENT WILL NOT DEGRADE SIGNIFICANTLY FOR AT LEAST FIVE (5) YEARS AFTER INITIAL INSTALLATION. MANUFACTURER WARRANTS THAT THE DETECTABLE DOME SYSTEM SOLD HEREUNDER WILL BE FREE FROM DEFECTS IN MATERIAL FOR A PERIOD OF FIVE (5) YEARS FROM DATE OF INSTALLATION. IF THE PRODUCTS DO NOT CONFORM TO THIS LIMITED WARRANTY DURING THE WARRANTY PERIOD (AS HEREIN ABOVE SPECIFIED), BUYER SHALL NOTIFY MANUFACTURER IN WRITING OF THE CLAIMED DEFECTS AND DEMONSTRATE TO MANUFACTURERS SATISFACTION THAT SAID DEFECTS ARE COVERED BY THIS LIMITED WARRANTY. IF THE DEFECTS ARE PROPERLY REPORTED TO MANUFACTURER WITHIN THE WARRANTY PERIOD, AND THE DEFECTS ARE OF SUCH TYPE AND NATURE AS TO BE COVERED BY THIS WARRANTY, MANUFACTURER SHALL, AT ITS OWN EXPENSE, FURNISH REPLACEMENT PRODUCTS OR, AT MANUFACTURER'S OPTION, REPLACEMENT PARTS FOR THE DEFECTIVE PRODUCTS. SHIPPING AND INSTALLATION OF THE REPLACEMENT PRODUCTS OR REPLACEMENT PARTS SHALL BE AT BUYER'S EXPENSE.

2. OTHER LIMITS:

- A. THE FOREGOING IS IN LIEU OF ALL OTHER WARRANTIES, EXPRESS OR IMPLIED, INCLUDING BUT NOT LIMITED TO THE IMPLIED WARRANTIES OF MERCHANTABILITY AND FITNESS FOR A PARTICULAR PURPOSE.
- B. MANUFACTURER DOES NOT WARRANT AGAINST DAMAGES OR DEFECTS ARISING OUT OF IMPROPER OR ABNORMAL USE OR HANDLING OF THE PRODUCTS; AGAINST DEFECTS OR DAMAGES ARISING FROM IMPROPER INSTALLATION (WHERE INSTALLATION IS BY PERSONS OTHER THAN MANUFACTURER), AGAINST DEFECTS IN PRODUCTS OR COMPONENTS NOT MANUFACTURED BY MANUFACTURER, OR AGAINST DAMAGES RESULTING FROM SUCH NON-MANUFACTURER MADE PRODUCTS OR COMPONENTS. THIS WARRANTY ALSO DOES NOT APPLY TO PRODUCTS UPON WHICH REPAIRS HAVE BEEN AFFECTED OR ATTEMPTED BY PERSONS OTHER THAN PURSUANT TO WRITTEN AUTHORIZATION BY MANUFACTURER.
- C. SYSTEM MEETS OR EXCEEDS CURRENT ADA CRITERIA AS SET FORTH BY STATE & FEDERAL REGULATIONS FOR DESIGN, SIZE AND PERFORMANCE. THEREFORE MANUFACTURER ASSUMES NO LIABILITY RESULTING FROM THE DESIGN, SIZE AND PERFORMANCE OF PRODUCT, SAVE THOSE NOTED HEREIN.

3. EXCLUSIVE OBLIGATION:

A. THIS WARRANTY IS EXCLUSIVE. THE SOLE AND EXCLUSIVE OBLIGATION OF MANUFACTURER SHALL BE TO REPAIR OR REPLACE THE DEFECTIVE PRODUCTS IN THE MANNER AND FOR THE PERIOD PROVIDED ABOVE. MANUFACTURER SHALL NOT HAVE ANY OTHER OBLIGATION WITH RESPECT TO THE PRODUCTS OR ANY PART THEREOF, WHETHER BASED ON CONTRACT, TORT, AND STRICT LIABILITY OR OTHERWISE. UNDER NO CIRCUMSTANCES, WHETHER BASED ON THIS LIMITED WARRANTY OR OTHERWISE, SHALL MANUFACTURER BE LIABLE FOR INCIDENTAL, SPECIAL, OR CONSEQUENTIAL DAMAGES.

4. OTHER STATEMENTS:

A. MANUFACTURER'S EMPLOYEES OR REPRESENTATIVES' ORAL OR OTHER WRITTEN STATEMENTS DO NOT CONSTITUTE WARRANTIES, SHALL NOT BE RELIED UPON BY BUYER, AND IS NOT A PART OF THE CONTRACT FOR SALE OR THIS LIMITED WARRANTY.

5. ENTIRE OBLIGATION:

A. THIS LIMITED WARRANTY STATES THE ENTIRE OBLIGATION OF MANUFACTURER WITH RESPECT TO THE PRODUCTS. IF ANY PART OF THIS LIMITED WARRANTY IS DETERMINED TO BE VOID OR ILLEGAL, THE REMAINDER SHALL REMAIN IN FULL FORCE AND EFFECT.

SYDNEY D CHASE, PRESIDENT

DATE

B.A.B.A. BUY AMERICA COMPLIANCE



Detectable Warning Systems

B.A.B.A. ACT OF NOVEMBER 15, 2021 COMPLIANCE CERTIFICATION

The supplier/bidder hereby certifies that it will comply with the requirements of sections **70901-52 of the Infrastructure Investment and Jobs Act**, applicable regulations in 49 U.S.C. Section 5323(j) and **Public Law No. 117-53 (11/15/2022) mandating use of Construction Materials Composite or Steel Detectable Warning Panels and Tiles used in public right of ways.**

The supplier/bidder further certifies that it complies with the **Build America, Buy America Act under the Infrastructure Investment and Jobs Act** requirements prevent FTA from obligating an amount that may be appropriated to carry out its program for a project unless "the steel, iron, and manufactured goods used in the project are produced in the United States" (49 U.S.C. § 5323(j)(1)). FTA's Buy America requirements apply to third-party procurements by FTA grant recipients. A grantee must include in its bid or request for proposal (RFP) specification for procurement of steel, iron or manufactured goods (including rolling stock) an appropriate notice of the Buy America provision and require, as a condition of responsiveness, that the bidder or offeror submit with the bid or offer a completed Buy America certificate in accordance with 49 CFR §§661.6 or 661.12.

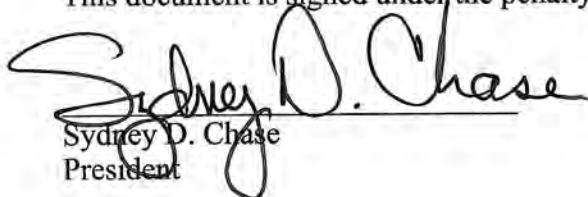
Further information concerning the Build America, Buy America Act can be obtained at the following site:
<https://www.transit.dot.gov/buyamerica>

EQUALTILE BY ADVANCED ROADWAY MANUFACTURING, INC. HEREBY CERTIFIES THAT THE MAUNUFACTURING FACILITIES ARE LOCATED AS FOLLOWS:

**Cast Iron
1955 Brunner Dr
Waupaca, WI 54981**

**Composite
1025 Blanton St
Titusville, FL 32796**

This document is signed under the penalty of perjury, this 20th of July 2022 in Titusville, FL.


Sydney D. Chase
President

ADVANCED ROADWAY MANUFACTURING, INC.
TELEPHONE: 626-808-7485
SYDNEYC@ROADWAYMFG.COM

By:  **ADVANCED
ROADWAY
MANUFACTURING INC**

(800) 996-4510
sales@roadwaymfg.com
www.equaltile.com



EQUALTILE

Proudly Manufactured By:



PROUDLY MADE IN THE USA DETECTABLE WARNING SYSTEMS

**WITH OVER 100 YEARS COMBINED EXPERIENCE IN
MANUFACTURING, SALES, INSTALLATION AND
MAINTENANCE**

**WWW.EQUALTILE.COM ~ 800-996-4510
SALES @ ROADWAYMFG.COM**