



# EQUALTILE

Proudly Manufactured By:



Brick Pattern (Wet Set) Replaceable  
Detectable Warning Systems

[WWW.EQUALTILE.COM](http://WWW.EQUALTILE.COM)

800-996-4510



# PRODUCT SELECTION

## CAST-IN-PLACE BRICK PATTERN



**Detectable Warning Systems**

### EqualTile Product Standard Panel Colors

All colors are blended into composite material during manufacturing and homogenous throughout the panel. Additional colors and sizes are available upon request.

<b>OCEAN BLUE</b> FED ST 15187	<b>GREEN</b> G-43	<b>PURPLE</b> R-44	<b>BRICK RED</b> FED ST 22144	<b>COLONIAL RED</b> FED ST 20109
<b>BLACK</b> FED ST 17038	<b>LIGHT GREY</b> FED ST 26280	<b>DARK GREY</b> FED ST 36118	<b>PINK</b> R-24	<b>FEDERAL YELLOW</b> FED ST 33538

### EqualTile Product Custom Colors

EqualTile by Advanced Roadway Manufacturing can produce unlimited color variations. We focus on customer service, by developing custom color detectable warning panels to meet the demands of architectural design requirements. EqualTile has worked closely with contractors, municipalities, and state agencies in developing our detectable warning panels to meet their needs and can produce just about any color to conform to project specifications. Contact your nearest EqualTile representative or an authorized Advanced Roadway Manufacturing distributor for more information or technical assistance on our products and capabilities.



(800) 996-4510  
[info@roadwaymfg.com](mailto:info@roadwaymfg.com)  
[www.equaltile.com](http://www.equaltile.com)

# PRODUCT SPECIFICATION

## CAST IN PLACE BRICK PATTERN



### Detectable Warning Systems

#### Wet Set (Cast-In-Place) Specifications:

SIZE WxLxD	PART NUMBER	STANDARD COLORS	CUSTOMIZABLE
24"x36"x1/4"	EQ-2X3-CAST	FEDERAL YELLOW, BRICK RED, BLUE, DK GREY, LT GREY, BLACK	YES
24"x48"x1/4"	EQ-2X4-CAST	FEDERAL YELLOW, BRICK RED, BLUE, DK GREY, LT GREY, BLACK	YES
24"x60"x1/4"	EQ-2X5-CAST	FEDERAL YELLOW, BRICK RED, BLUE, DK GREY, LT GREY, BLACK	YES
36"x48"x1/4"	EQ-3X4-CAST	FEDERAL YELLOW, BRICK RED, BLUE, DK GREY, LT GREY, BLACK	YES
36"x60"x1/4"	EQ-3X5-CAST	FEDERAL YELLOW, BRICK RED, BLUE, DK GREY, LT GREY, BLACK	YES

#### Product Features

- ☑ 5 Year Manufacturer Warranty
- ☑ Durable & Strong
- ☑ Ease Of Install
- ☑ Simple Replacement
- ☑ Ships Nationwide
- ☑ Manufactured With Over 100 Years Of Combined Experience In Production, Sales, Installation And Maintenance
- ☑ Guaranteed Satisfaction
- ☑ B.A.B.A. Certified - Made In USA

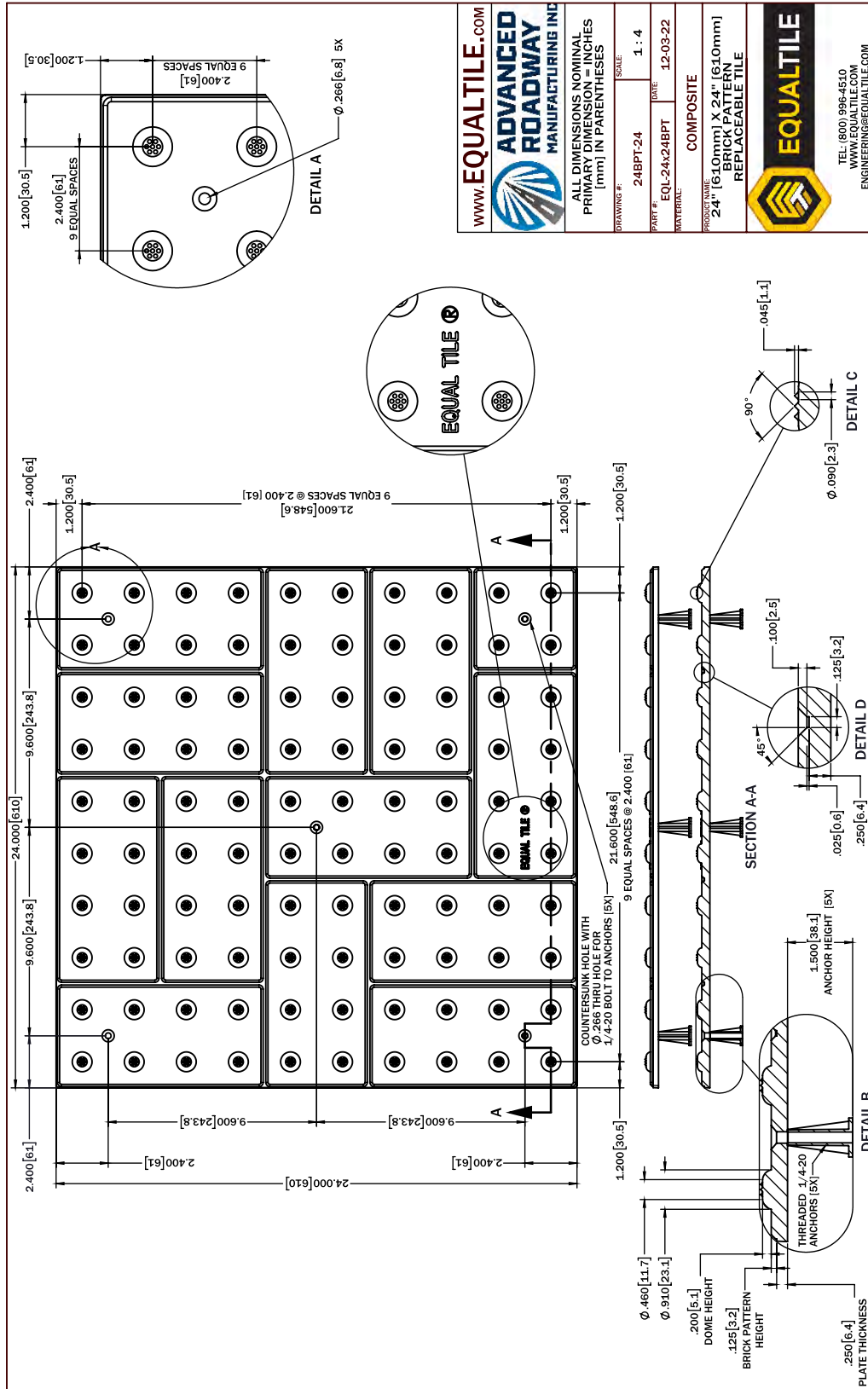
#### Wet Set (Cast-In-Place) Technical Data:

TEST DESCRIPTION	TEST METHOD	VALUE (Nominal)
COMPRESSION STRENGTH	ASTM D 695-02A	30,606 PSI
WATER ABSORPTION	FM 5-D570	0.1%
FLEXURAL STRENGTH	ASTM D 790	30,000 PSI
FLEXURAL MODULUS	ASTM D 790	1,500 KSI
TENSILE STRENGTH	ASTM D 638	13,000 PSI
TENSILE MODULUS	ASTM D 638	2,000 KSI
TENSILE ELONGATION	ASTM D 638	3.0%
HDT	ASTM D 648	170 DEGREES FAHRENHEIT
SLIP RESISTANCE	ASTM 3-C1028	1.03 DRY, 0.86 WET
WEAR RESISTANCE	FM 5-594	0.031 CM <sup>3</sup>
SALT SPRAY	ASTM B 117	NO CHANGE (200 HOURS)
CHEMICAL STAIN TESTING	ASTM D 543	NO DETERIORATION
ABRASION RESISTANCE	ASTM C 501	435
EPA (RCRA)	EPA-1311, EPA-6010D, EPA-7470A	MEETS REGULATIONS
ACCELERATED WEATHERING	ASTM G 29	NO DAMAGE
FLAME SPREAD INDEX	ASTM E 84	15
SMOKE DEVELOPMENT INDEX	ASTM E 84	300
FREEZE / THAW / HEAT	ASTM C 1026	NO DISINTEGRATION
LOAD BEARING @ 16K LBS	AASHTO-H20	NO DAMAGE
BARCOL HARDNESS	ASTM D 2583	30-60



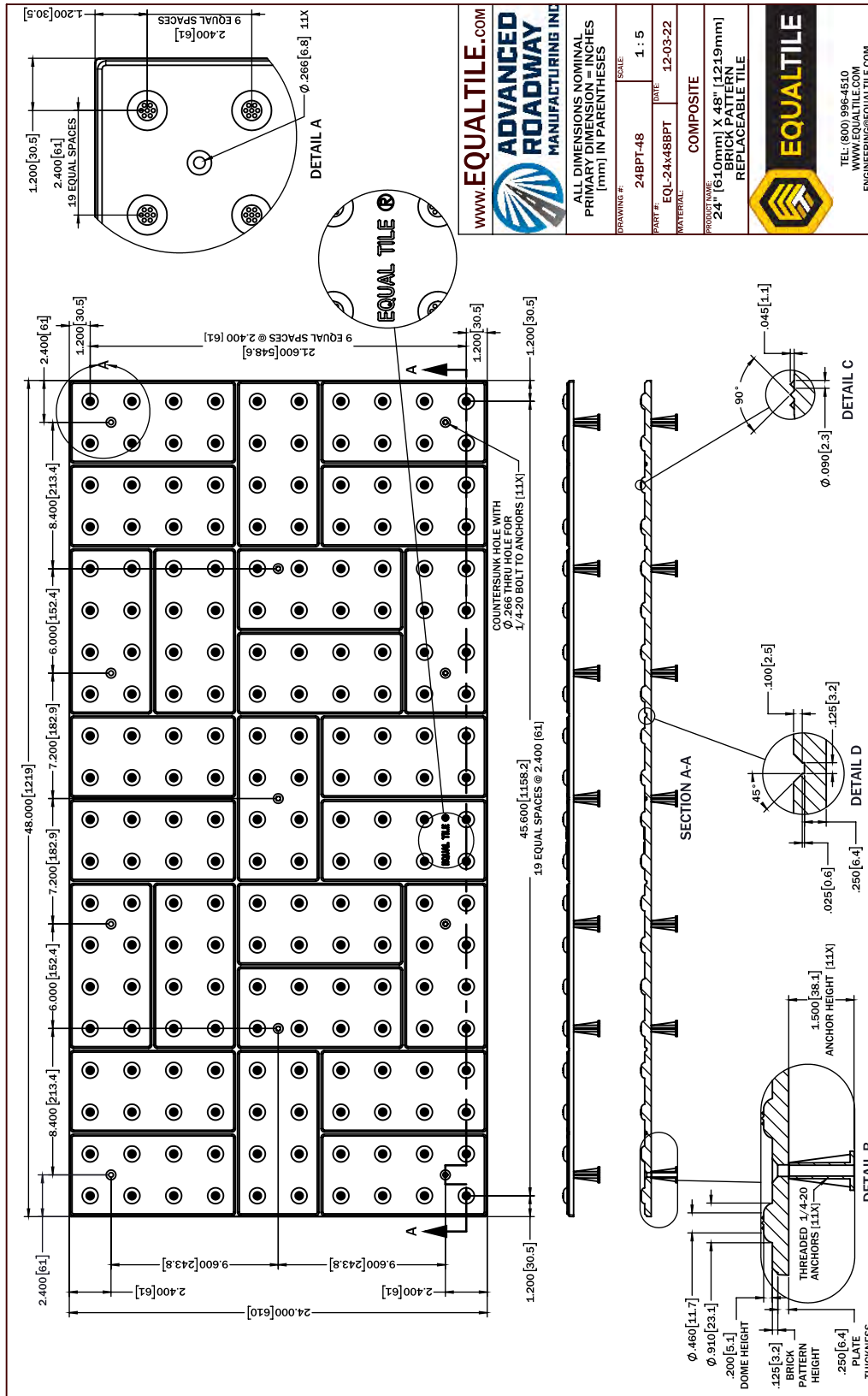
(800) 996-4510  
 info@roadwaymfg.com  
 www.equaltile.com

# BRICK PATTERN 2'X2' CAST IN PLACE





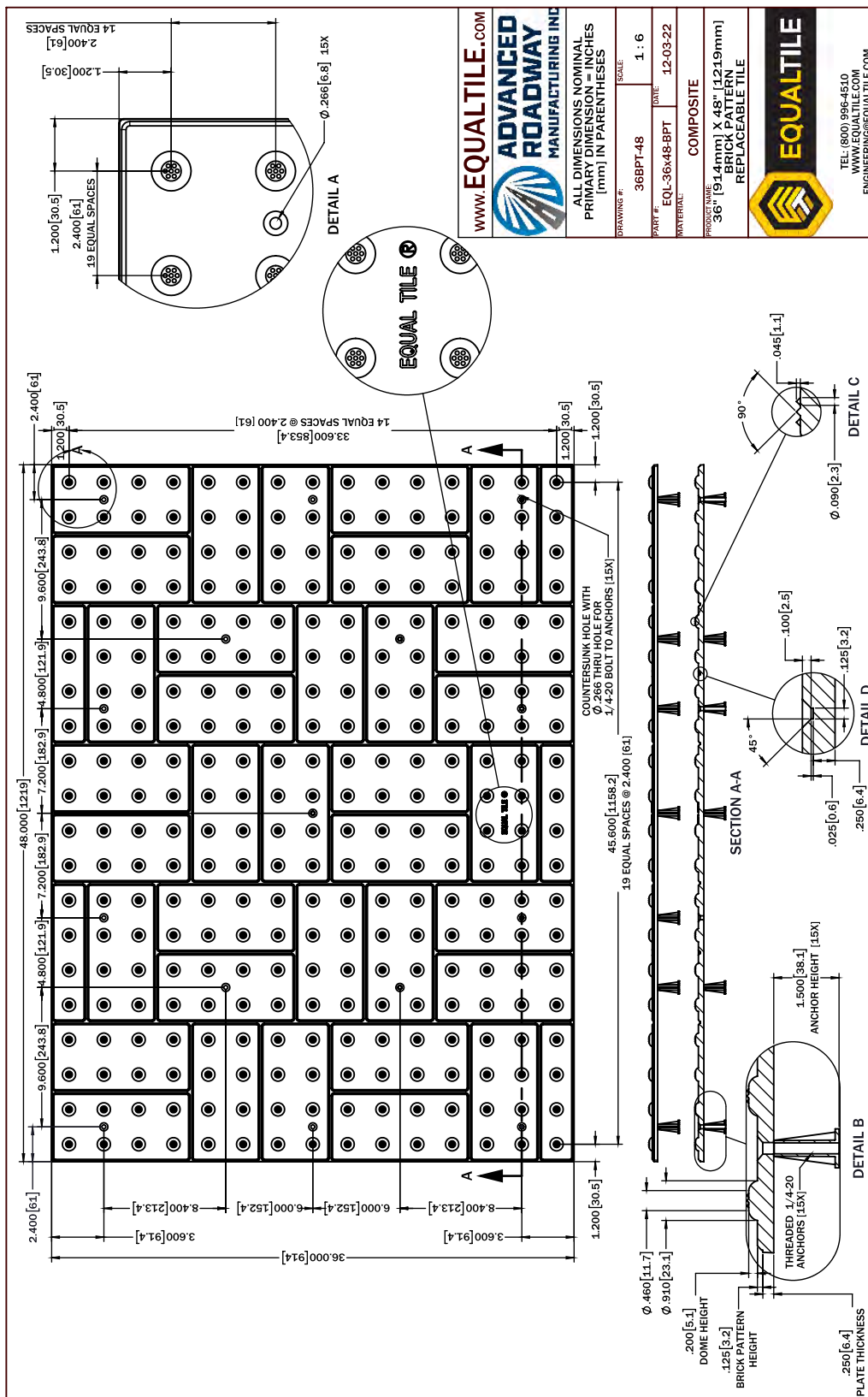
# BRICK PATTERN 2'X4' CAST IN PLACE



(800) 996-4510  
 info@roadwaymfg.com  
 www.equaltile.com

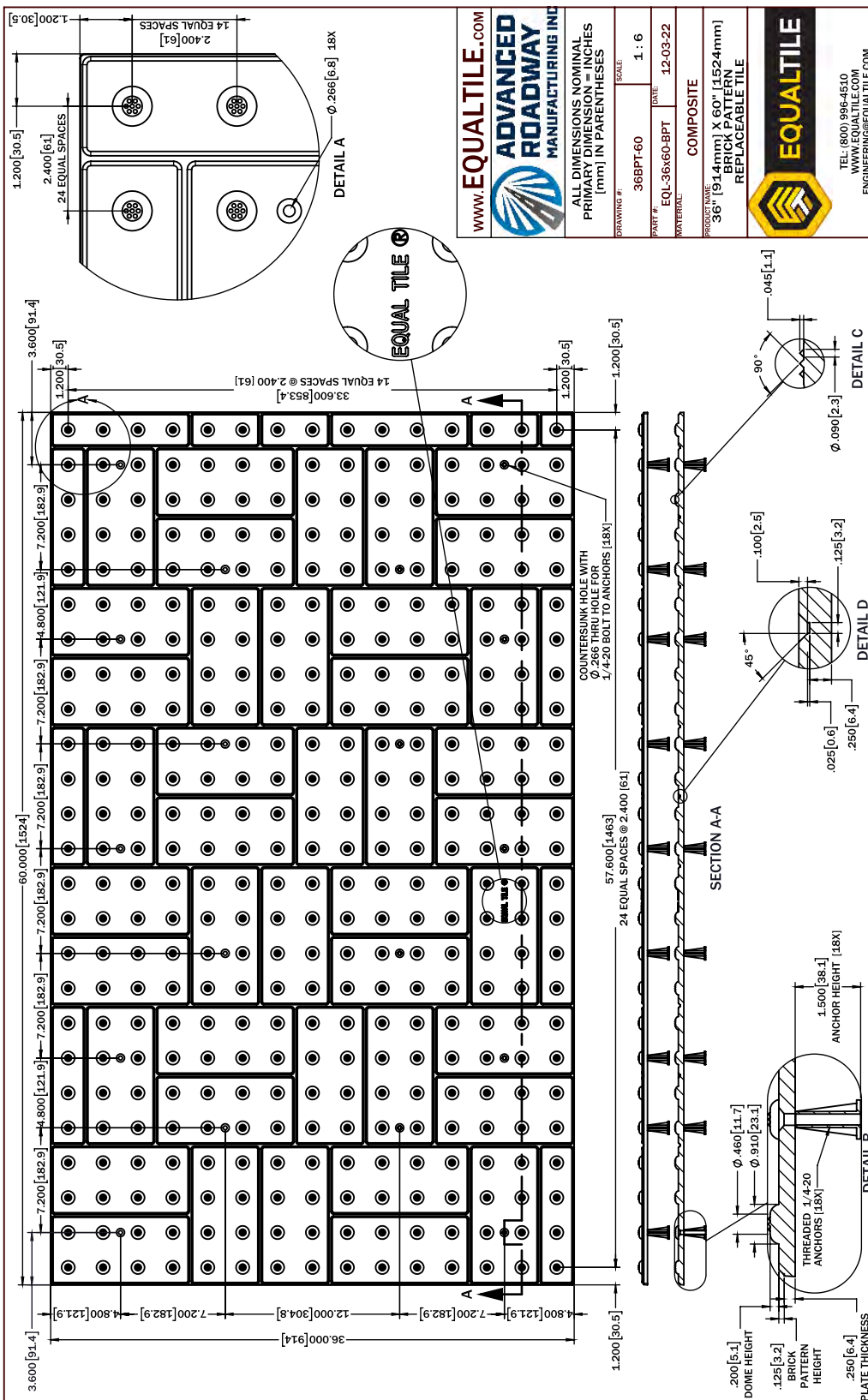


# BRICK PATTERN 3'X4' CAST IN PLACE



(800) 996-4510  
info@roadwaymfg.com  
www.equaltile.com

# BRICK PATTERN 3'X5' CAST IN PLACE



(800) 996-4510  
 info@roadwaymfg.com  
 www.equaltile.com

# WET SET REPLACEABLE PANEL INSTALLATION



## Detectable Warning Systems

### Recommended Wet Set Panel Instructions:

1. Follow all safety requirements that include but not limited to, State, Federal and/or Local safety standards.
2. Concrete shall conform to all requirements as specified by the contract document.
3. Tools required for installation are typical of those used by concrete finishers.
4. Do not remove the anchors or bolts before placement. Panel shall be placed in concrete with all the hardware attached.
5. After concrete is poured the contractor shall establish finished grade using mason line or other appropriate methods. The polymer concrete panel shall be placed on top of the concrete and tamped in place using installer's weight or concrete vibrator to facilitate placement in a low slump concrete. Final panel elevation shall be verified.
6. Make sure the proper slope is obtained as specified in the contract document.
7. Low slump concrete may require 25 to 50 pound weights to weigh down panels after placement in concrete.
8. Steel edging trowel with a minimum of 1/8" radius shall be used to edge the finished concrete around the panel. 1/4" deep groove is required.
9. Once concrete is hardened, remove weights and panel protective cover.
10. Protect the installed tiles from pedestrian and vehicular traffic until concrete is hardened.



### Replaceable Panels

### Replacement Instructions:

1. Simply unscrew bolts from panel.
2. Pry panel up and lift away.
3. Clean surface area.
4. Replace with new panel.
5. Screw bolts back into anchors.



(800) 996-4510  
info@roadwaymfg.com  
www.equaltile.com



## STANDARD LIMITED MATERIAL WARRANTY

PROJECT: \_\_\_\_\_  
\_\_\_\_\_  
\_\_\_\_\_

DATE OF COMPLETION: \_\_\_\_\_

REFERENCE NUMBER: \_\_\_\_\_

INSTALLED BY: \_\_\_\_\_  
\_\_\_\_\_  
\_\_\_\_\_

TOTAL SQUARE FEET: \_\_\_\_\_

PATTERN & COLOR: \_\_\_\_\_

**1. LIMITED WARRANTY:**

A. EQUALTILE (AN ADVANCED ROADWAY MANUFACTURING COMPANY) ("MANUFACTURER") WARRANTS THAT THE DETECTABLE DOME SYSTEM ("PRODUCT") COMPLIES WITH THE ARCHITECTURAL STANDARDS AS PUBLISHED IN THE CURRENT EDITION OF THE BUILDING STANDARDS CODE, INCLUDING DURABILITY CRITERIA WHICH INDICATES THAT THE SHAPE, COLOR FASTENERS, CONFIRMATION, SOUND-ON-SOUND, ACOUSTIC QUALITY, RESILIENCE AND ATTACHMENT WILL NOT DEGRADE SIGNIFICANTLY FOR AT LEAST FIVE (5) YEARS AFTER INITIAL INSTALLATION. MANUFACTURER WARRANTS THAT THE DETECTABLE DOME SYSTEM SOLD HEREUNDER WILL BE FREE FROM DEFECTS IN MATERIAL FOR A PERIOD OF FIVE (5) YEARS FROM DATE OF INSTALLATION. IF THE PRODUCTS DO NOT CONFORM TO THIS LIMITED WARRANTY DURING THE WARRANTY PERIOD (AS HEREIN ABOVE SPECIFIED), BUYER SHALL NOTIFY MANUFACTURER IN WRITING OF THE CLAIMED DEFECTS AND DEMONSTRATE TO MANUFACTURERS SATISFACTION THAT SAID DEFECTS ARE COVERED BY THIS LIMITED WARRANTY. IF THE DEFECTS ARE PROPERLY REPORTED TO MANUFACTURER WITHIN THE WARRANTY PERIOD, AND THE DEFECTS ARE OF SUCH TYPE AND NATURE AS TO BE COVERED BY THIS WARRANTY, MANUFACTURER SHALL, AT ITS OWN EXPENSE, FURNISH REPLACEMENT PRODUCTS OR, AT MANUFACTURER'S OPTION, REPLACEMENT PARTS FOR THE DEFECTIVE PRODUCTS. SHIPPING AND INSTALLATION OF THE REPLACEMENT PRODUCTS OR REPLACEMENT PARTS SHALL BE AT BUYER'S EXPENSE.

**2. OTHER LIMITS:**

- A. THE FOREGOING IS IN LIEU OF ALL OTHER WARRANTIES, EXPRESS OR IMPLIED, INCLUDING BUT NOT LIMITED TO THE IMPLIED WARRANTIES OF MERCHANTABILITY AND FITNESS FOR A PARTICULAR PURPOSE.
- B. MANUFACTURER DOES NOT WARRANT AGAINST DAMAGES OR DEFECTS ARISING OUT OF IMPROPER OR ABNORMAL USE OR HANDLING OF THE PRODUCTS; AGAINST DEFECTS OR DAMAGES ARISING FROM IMPROPER INSTALLATION (WHERE INSTALLATION IS BY PERSONS OTHER THAN MANUFACTURER), AGAINST DEFECTS IN PRODUCTS OR COMPONENTS NOT MANUFACTURED BY MANUFACTURER, OR AGAINST DAMAGES RESULTING FROM SUCH NON-MANUFACTURER MADE PRODUCTS OR COMPONENTS. THIS WARRANTY ALSO DOES NOT APPLY TO PRODUCTS UPON WHICH REPAIRS HAVE BEEN AFFECTED OR ATTEMPTED BY PERSONS OTHER THAN PURSUANT TO WRITTEN AUTHORIZATION BY MANUFACTURER.
- C. SYSTEM MEETS OR EXCEEDS CURRENT ADA CRITERIA AS SET FORTH BY STATE & FEDERAL REGULATIONS FOR DESIGN, SIZE AND PERFORMANCE. THEREFORE MANUFACTURER ASSUMES NO LIABILITY RESULTING FROM THE DESIGN, SIZE AND PERFORMANCE OF PRODUCT, SAVE THOSE NOTED HEREIN.

**3. EXCLUSIVE OBLIGATION:**

A. THIS WARRANTY IS EXCLUSIVE. THE SOLE AND EXCLUSIVE OBLIGATION OF MANUFACTURER SHALL BE TO REPAIR OR REPLACE THE DEFECTIVE PRODUCTS IN THE MANNER AND FOR THE PERIOD PROVIDED ABOVE. MANUFACTURER SHALL NOT HAVE ANY OTHER OBLIGATION WITH RESPECT TO THE PRODUCTS OR ANY PART THEREOF, WHETHER BASED ON CONTRACT, TORT, AND STRICT LIABILITY OR OTHERWISE. UNDER NO CIRCUMSTANCES, WHETHER BASED ON THIS LIMITED WARRANTY OR OTHERWISE, SHALL MANUFACTURER BE LIABLE FOR INCIDENTAL, SPECIAL, OR CONSEQUENTIAL DAMAGES.

**4. OTHER STATEMENTS:**

A. MANUFACTURER'S EMPLOYEES OR REPRESENTATIVES' ORAL OR OTHER WRITTEN STATEMENTS DO NOT CONSTITUTE WARRANTIES, SHALL NOT BE RELIED UPON BY BUYER, AND IS NOT A PART OF THE CONTRACT FOR SALE OR THIS LIMITED WARRANTY.

**5. ENTIRE OBLIGATION:**

A. THIS LIMITED WARRANTY STATES THE ENTIRE OBLIGATION OF MANUFACTURER WITH RESPECT TO THE PRODUCTS. IF ANY PART OF THIS LIMITED WARRANTY IS DETERMINED TO BE VOID OR ILLEGAL, THE REMAINDER SHALL REMAIN IN FULL FORCE AND EFFECT.

\_\_\_\_\_  
SYDNEY D CHASE, PRESIDENT

\_\_\_\_\_  
DATE

## **B.A.B.A. ACT OF NOVEMBER 15, 2021 COMPLIANCE CERTIFICATION**

The supplier/bidder hereby certifies that it will comply with the requirements of sections **70901-52 of the Infrastructure Investment and Jobs Act**, applicable regulations in 49 U.S.C. Section 5323(j) and **Public Law No. 117-53 (11/15/2022) mandating use of Construction Materials Composite or Steel Detectable Warning Panels and Tiles used in public right of ways.**

The supplier/bidder further certifies that it complies with the **Build America, Buy America Act under the Infrastructure Investment and Jobs Act** requirements prevent FTA from obligating an amount that may be appropriated to carry out its program for a project unless "the steel, iron, and manufactured goods used in the project are produced in the United States" (49 U.S.C. § 5323(j)(1)). FTA's Buy America requirements apply to third-party procurements by FTA grant recipients. A grantee must include in its bid or request for proposal (RFP) specification for procurement of steel, iron or manufactured goods (including rolling stock) an appropriate notice of the Buy America provision and require, as a condition of responsiveness, that the bidder or offeror submit with the bid or offer a completed Buy America certificate in accordance with 49 CFR §§661.6 or 661.12.

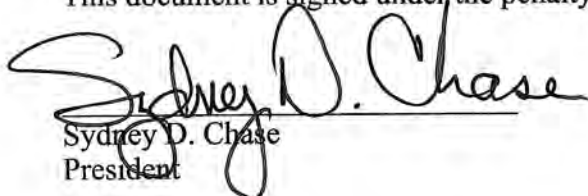
Further information concerning the Build America, Buy America Act can be obtained at the following site:  
<https://www.transit.dot.gov/buyamerica>

### **EQUALTILE BY ADVANCED ROADWAY MANUFACTURING, INC. HEREBY CERTIFIES THAT THE MAUNUFACTURING FACILITIES ARE LOCATED AS FOLLOWS:**

**Cast Iron  
1955 Brunner Dr  
Waupaca, WI 54981**

**Composite  
1025 Blanton St  
Titusville, FL 32796**

This document is signed under the penalty of perjury, this 20th of July 2022 in Titusville, FL.

  
Sydney D. Chase  
President

ADVANCED ROADWAY MANUFACTURING, INC.  
TELEPHONE: 626-808-7485  
SYDNEYC@ROADWAYMFG.COM



# EQUALTILE

Proudly Manufactured By:



## **PROUDLY MADE IN THE USA DETECTABLE WARNING SYSTEMS**

**WITH OVER 100 YEARS COMBINED EXPERIENCE IN  
MANUFACTURING, SALES, INSTALLATION AND  
MAINTENANCE**

**WWW.EQUALTILE.COM ~ 800-996-4510  
INFO @ ROADWAYMFG.COM**